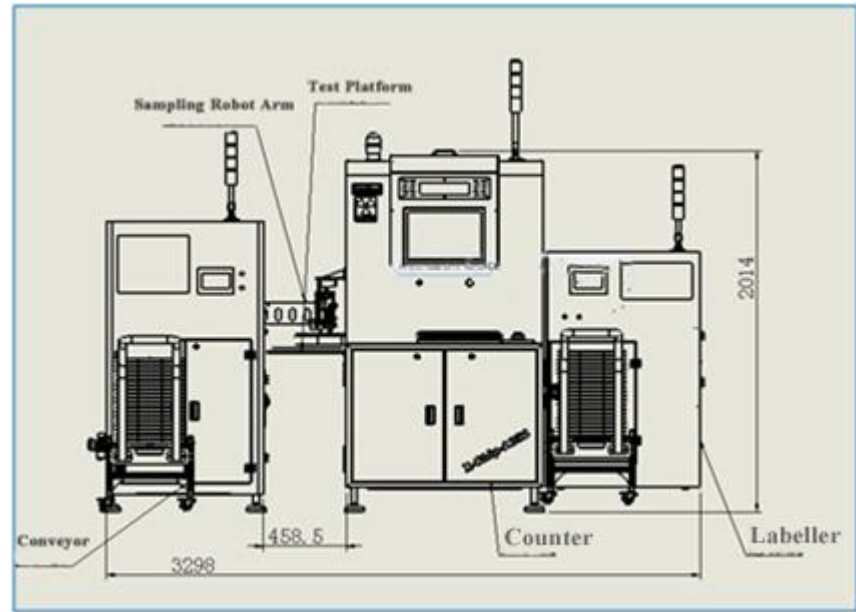


Online X-RAY Chip Counter Machine X-Chip-A350



X-Chip-A350 Counter



Plane Graph of Equipment

This X-RAY chip counter machine can greatly improve the production efficiency, to realize the automation and electronic components inventory management information, the main principle through X-ray penetrate the imaging principle of image information, for items of the SMT production materials, nondestructive testing, image import artificial intelligence algorithms computing, automatic rapid calculation material the actual number of the material.



Online X-RAY Chip Counter Machine X-Chip-A350

Online X-Ray Chip Counter Machine

Automatic labeling machine

Automatic Feeding Machine 02

01

03



I-O-S

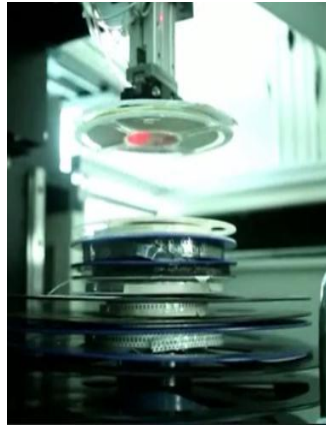


Online X-RAY Chip Counter Machine X-Chip-A350

Working Process



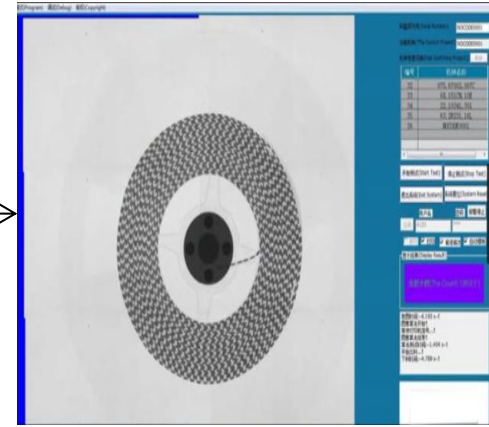
Trolley feeding



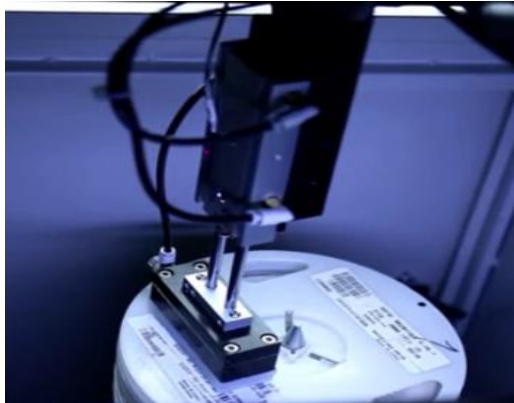
Grab reel



Read barcode information



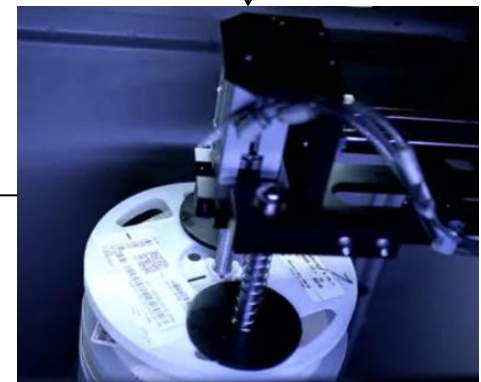
Computing structure



Labeling



Marking

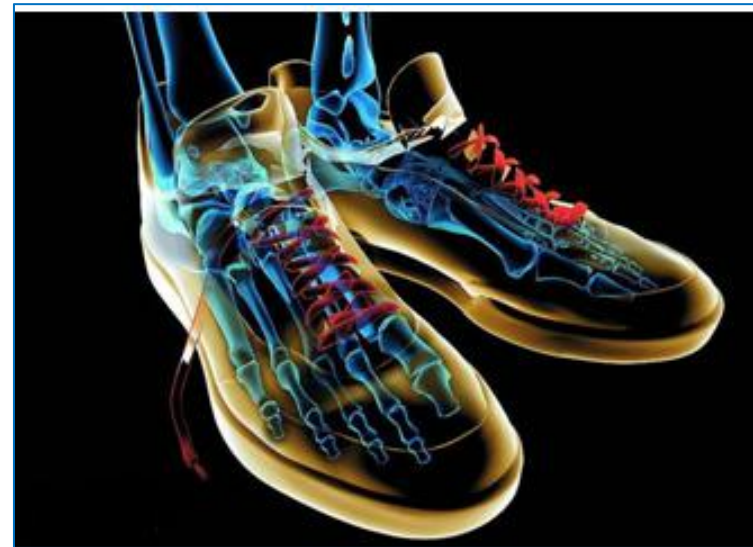
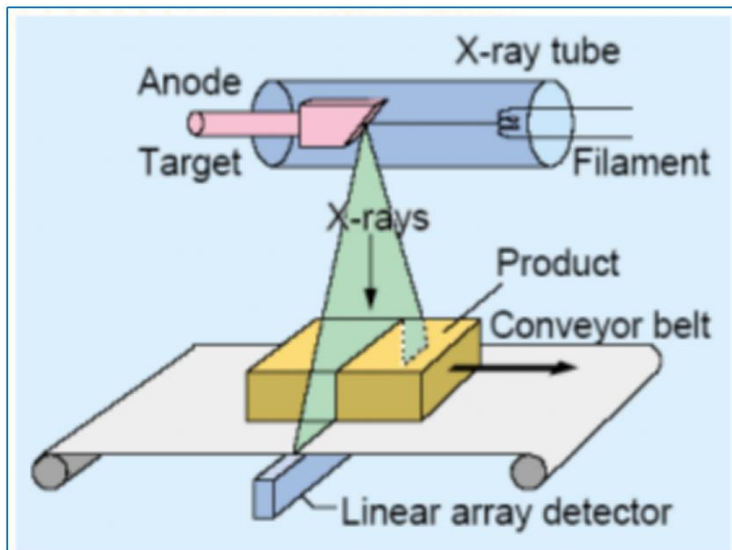


Discharging and Visual positioning

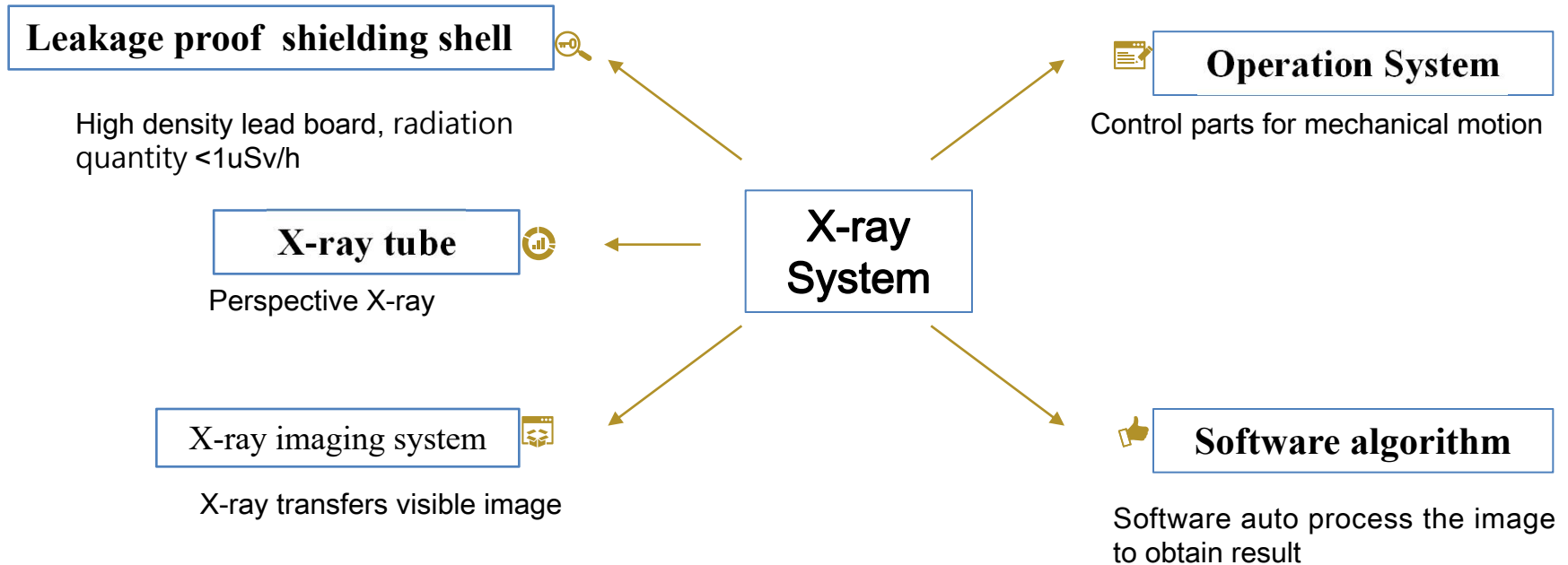


Detail

X-RAY Counter Principle



Detail



Detail

Performance Standard

Reel Specification

Minimal Diameter: 180mm;
Maximal Diameter: 380mm;

Conveying

Single input & output/Left input & right output;
Single input & output/ Rght input & left output
(dual purpose);
Front pallet/back robot arm

Parameter

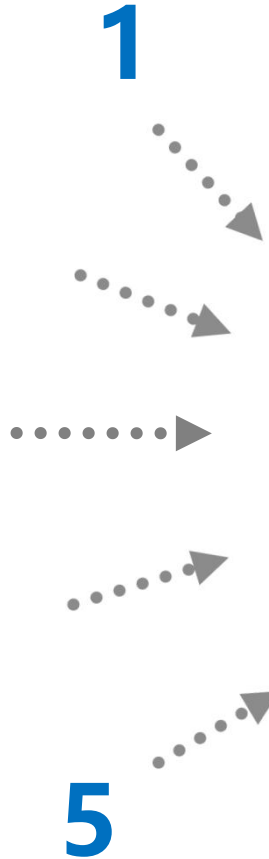
Accuracy 99.9% (100% for IC);
Speed (single input & output):
180MM— about 16s ; 330MM—
about 23s; 380MM—about 29s

Environment

Voltage: AC110~220V 15AC, 50/60HZ;
Low radiation quantity <1μSv/h

Optional Function

Automatic bar code scanning, print bar code
and connect to ERP/MES system



Detail

Software Neuron Algorithm

A neural network is usually composed of a wide range of neurons. The overall behavior of a system depends not only on the characteristics of a single neuron, but may also be determined by the interaction between the elements and the connection.

The evolution of a system, under certain conditions, depends on a particular state function



The nonlinear relationship is a common characteristic of the nature. The wisdom of the brain is a nonlinear phenomenon. The artificial neuron is in the activation or suppression of two different states, this kind of behavior in mathematics is a kind of nonlinear artificial neural network.

Artificial neural networks are adaptive, self-organizing and self-learning



Features



Return of investment:
8~10 months



In-line inspection,
no manual operation
needed



Take the place of
labour of **10~12**
persons, efficient;



Able to connect to
ERP/MES System



Improve accuracy
of storage



Online X-RAY Chip Counter Machine X-Chip-A350

Specifications:

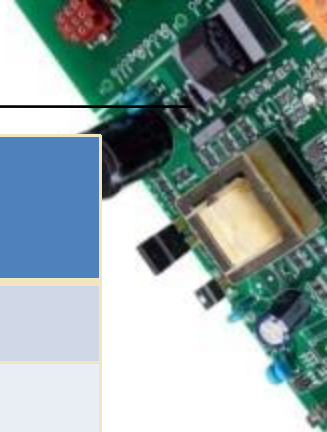
	X- Chip-350		X-Chip-A350		X-Chip-150
Scanning Size	180mm-380mm (400mm optional)				180mm-330mm
Speed	15 seconds	25 seconds	20 seconds	35seconds	20 seconds
X-ray TUBE					
TUBE Max Volt	80 kV				100KV
TUBE max current	4.5 mA				
TUBE max power	350 W				150 W
Reel size	Minimal size of the CHIP 0201/01005				
Reel height	8mm-45mm				8mm-30mm
Code Scanning Way	Manually scanning/CCD automatic scanning(optional)				
Database	Connectible to ERP system or MES system				
Sample Conveying	Front Inlet and outlet	Left to right/Right to left		Front Inlet and outlet	
Equipment Size	1300mm(L)x1200mm(W)x1970mm(H)				1340mm(L)x1545mm(W)x1970mm(H)
Power Supply	220VAC ± 10% 50/60Hz				
Power	3KW				
Air Pressure	0.5Mpa				
Working Temperature	<40°C				
Relative Humidity	Standard 70%@32°				
Safety	Comply to national safety scope - 1u Sv/h				



Online X-RAY Chip Counter Machine X-Chip-A350

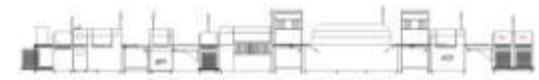
		Item	Parameter	Traditional	X — Chip-150	X — Chip-A350	
Labour that is replaced	Condition	Counting Performance	Counting time/reel (s)	78	15	20	
			Efficiency (%)	40	80	100	
			Data input to system	12~15 s	N/A	N/A	
			Time/reel (s)	233	22	20	
			Time/day	340	3200	3960	
	Regular Counting	Total reel per day					
		Total shift					
		Person per day		5~6	1	0.5	
		Persons needed for 2 shift		10~12	2	1	
	Cost of Labour & Equipment	Cost accounting	Labour cost (person/month)		680~760USD		
			Technician (person/month)		834~985USD		
			Total labour cost per year		127272USD		
			Cost for occupation, power and maintenance/repair		100000		
			Managing cost				
	Analysis of investment returning		Need about 10 months to return the investment				





Automatic Feeding Machine FM-200

Reel size	Diameter of 7 "13" 15"
Reel height	8mm-85mm
Speed	10S
Feeding mode	There are two stations, each of which can cache 50 pieces of reel (calculated at 10mm per reel), and the two stations are recycled.
Function introduced	Automatic continuous to intelligent point feeding machine for automatic equipment, connected to X-Ray chip counter machine.
Weight	380KG
Equipment Size	L1060*W940*H1600
Power Supply	220VAC 50/60HZ
Power	600W
Air Pressure	0.4~0.6Mpa
Working Temperature	<40°C
Relative Humidity	Standard 70%@32°





Automatic Labeling machine LM-300	
Reel size	Diameter of 7 "13" 15"
Reel height	8mm-85mm
Speed	10S
Optional	The new barcode is attached to the tray and covered with the old bar code by visual identification of the old barcode coordinates.
Weight	350KG
Equipment Size	L850*W970*H1400
Power Supply	220VAC 50/60HZ
Power	800W
Air Pressure	0.4~0.6Mpa
Working Temperature	<40°C
Relative Humidity	Standard 70%@32°

